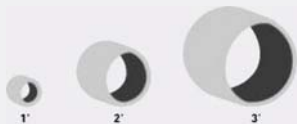


GTU TURRET REWINDERS

FEATURES	MIN	MAX	MEASURE
Web Width	13"	20"	inch
Slitting width	1.46"	-	inch
Ins. Core \varnothing	1"	3"	inch
Finished roll \varnothing	1"	12"	inch
Speed	-	820	f/min

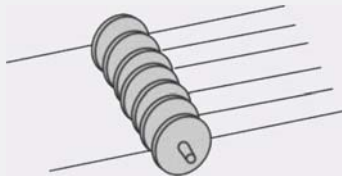
Glueless
Fast changeover
Remote assistance & Webcam
Servo driven fully automatic
Roll closing with printed label





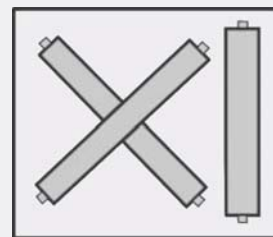
CORE HOPPER

Multiformat automated core hopper. Basic, standard or advanced models.



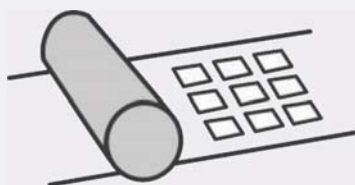
SLITTING

Accurate slitting with fast change trolley.



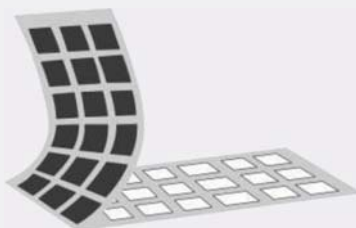
WEB TURNING

Air assisted web turning module.



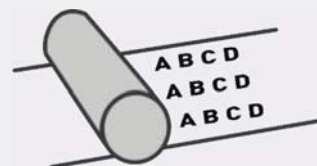
DIE CUTTING

Robust die cutting group with micrometric adjustment and pressure hydra jacks.



MATRIX STRIPPING

Servo driven matrix contact stripping group.



FLEXO PRINTING

Servo driven in register flexo printing group for water based and UV inks.



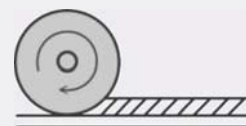
CORE LOADING

Servo driven core loading system.



LINERLESS

Upgrade for rewinding linerless rolls.



COATING

In-line hot melt coating module for linerless rolls.